

## Refrigeration Equipment 2-Door Refrigerated Work Top 48" Long - 220V/50Hz

ITEM # \_\_\_\_\_

MODEL # \_\_\_\_\_

NAME # \_\_\_\_\_

SIS # \_\_\_\_\_

AIA # \_\_\_\_\_



738343  
(KCHUCWT48R-220.50)

2-Door Refrigerated Work Top  
48" Long - 220V/50Hz

### Short Form Specification

Item No. \_\_\_\_\_

2-door refrigerator counter top with worktop with exterior back panel, exterior bottom panel, and exterior top panel in galvanized steel, exterior side panel in 430 stainless steel; interior back, top and bottom panels in 304 stainless steel. Fin & tube condenser to improve the performances in high-temperature environments. Automatic Defrost Cooling System and temperature control. Vinyl heavy duty adjustable, easy to handle and clean shelves. External temperature display.

220V / 50Hz / 1ph supply voltage  
R290 gas in the refrigeration circuit.  
CE certification

### Main Features

- Integrated built in backsplash, minimizes material waste
- External temperature display.
- Removable gasket for easy cleaning operations.
- Fin & Tube Condenser improves performance in high temperature environments.
- Automatic Defrost Cooling System provides worry-free performance.
- Electronic Temperature Control, quick and simple to set, with control display for easy monitoring.
- Heavy duty Vinyl coated steel shelves.
- Cabinet completely insulated with high density polyurethane for low environmental impact.
- Adjustable shelves for flexible storage
- Back bottom mounted cooling unit guarantee an easy access and cleaning.
- Removable rubber bumper guards for airflow spacing and shock absorption

### Construction

- Stainless steel interior and exterior, durable and easy to clean for daily commercial use.
- Self-closing door with 90-degree stay-open feature.
- White polystyrene interior side panels, for high impact resistance
- Pre-wired heavy duty power cord.
- Heavy duty door hinges.
- Heavy duty casters.
- Magnetic gasket removable without tools for easy cleaning.
- Stainless steel worktop, durable functionality

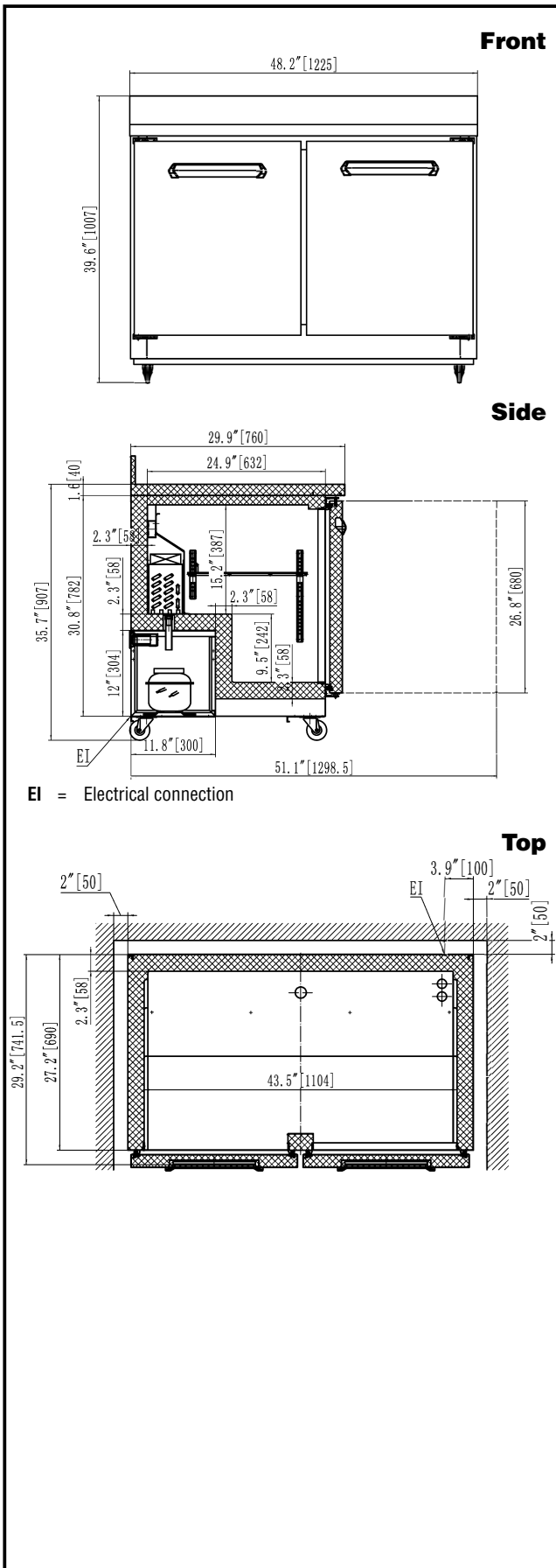
### Sustainability

- CFC and HCFC free, highly ecological refrigerant type: R290 (ecological gas in foam: cyclopentane). Hydrocarbon refrigerant gas R290 for the lowest environmental impact (GWP=3), to reduce green house and ozone depletion effects.
- High efficiency components to minimize the energy consumption still guaranteeing the highest performances.
- Hydrocarbon refrigerant gas R290 for the lowest environmental impact (GWP=3) - CFC and HCFC free.
- 60 mm insulation for energy saving.

### Optional Accessories

- 1 Adjustable Foot PNC 206445
- Drawers Kit for L/R section of 48" & PNC 880616   
72" Mega Top, Salad Top,  
Undercounter Refrigerator, and  
Work Top Refrigerator

APPROVAL: \_\_\_\_\_



## Electric

Supply voltage:	220 V/1 ph/50 Hz
Electrical power, max:	0.29 kW

## Capacity:

Gross capacity:	12 cu.feet
-----------------	------------

## Key Information:

Number and type of grids (included):	2 - Vinyl-Coated steel
Door hinges:	1 Left+1 Right
External dimensions, Width:	48 1/4" (1225 mm)
External dimensions, Depth:	29 15/16" (760 mm)
External dimensions, Height:	39 5/8" (1007 mm)
Number and type of doors:	2 Full
Internal Dimensions (depth):	24 13/16" / (630 mm)
Internal Dimensions (height):	24 7/16" / (620 mm)
Internal Dimensions (width):	43 5/16" / (1100 mm)
Shipping height:	42 1/8" (1070 mm)
Shipping weight:	280 lbs (127.01 kg)
Shipping volume:	38.24 ft <sup>3</sup> (1.08 m <sup>3</sup> )
Type of external material:	Stainless Steel
Type of internal material:	Polystyrene
Approvals	CE

## Refrigeration Data

Condenser type:	Fin & tube
Operating temperature min.:	32 °F
Compressor power:	1/4 hp
Operating temperature max.:	41 °F
Defrost type:	Auto Defrost

## Sustainability

Current consumption:	2 Amps
Refrigerant type:	R290
GWP Index:	3
Refrigerant weight:	100 g

